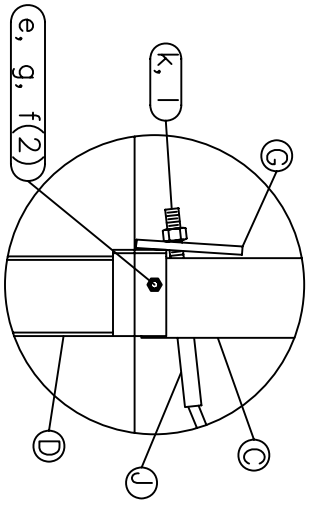
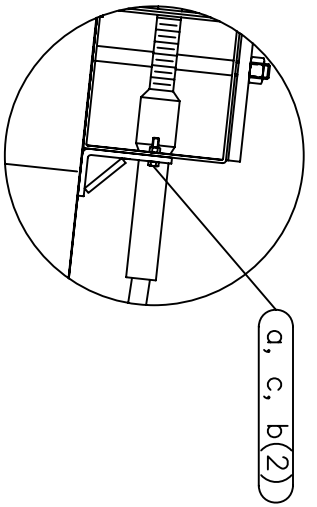


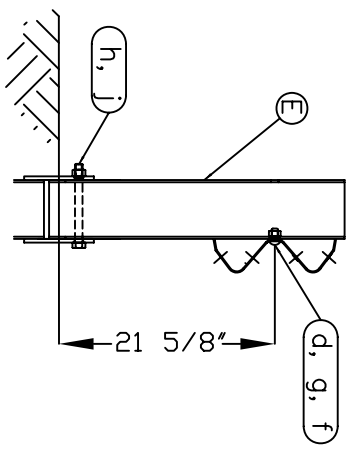
OPTIONAL FLARED INSTALLATION
25:1 maximum flare rate



Post #1 Connection Detail



Impact Head Connection Detail



SECTION A-A
Post #2

| ITEM | QTY | BILL OF MATERIALS | ITEM NO. |
|-------------------------------------|-----|-------------------------------------------|-----------|
| A | 1 | IMPACT HEAD | S3000 |
| B | 1 | W-BEAM GUARDRAIL END SECTION, 12 Ga. | SF1303 |
| C | 1 | FIRST POST TOP (6X6 $\frac{1}{2}$ " Tube) | TPHP1A |
| D | 1 | FIRST POST BOTTOM (6' W6X15) | TPHP1B |
| E | 1 | SECOND POST ASSEMBLY TOP | HP2A |
| F | 1 | SECOND POST ASSEMBLY BOTTOM | HP3B |
| G | 1 | BEARING PLATE | E750 |
| H | 1 | CABLE ANCHOR BOX | S760 |
| J | 1 | BCT CABLE ANCHOR ASSEMBLY | E770 |
| HARDWARE (ALL DIMENSIONS IN INCHES) | | | |
| a | 2 | 5/16 x 1 HEX BOLT GRD 5 | B5160104A |
| b | 4 | 5/16 WASHER | W0516 |
| c | 2 | 5/16 HEX NUT | N0516 |
| d | 9 | 5/8 Dia. x 1 1/4 SPLICE BOLT (POST #2) | B580122 |
| e | 1 | 5/8 Dia. x 9 HEX BOLT GRD 5 | B580904A |
| f | 3 | 5/8 WASHER | W050 |
| g | 10 | 5/8 Dia. H.G.R NUT | N050 |
| h | 1 | 3/4 Dia. x 8 1/2 HEX BOLT GRD A449 | B340854A |
| j | 1 | 3/4 Dia. HEX NUT | N030 |
| k | 2 | 1 ANCHOR CABLE HEX NUT | N100 |
| l | 2 | 1 ANCHOR CABLE WASHER | W100 |
| m | 8 | CABLE ANCHOR BOX SHOULDER BOLT | SB58A |
| n | 8 | 1/2 A325 STRUCTURAL NUT | N055A |
| o | 16 | 1 1/16 OD x 9/16 ID A325 STR. WASHER | W050A |

GENERAL NOTES:

1. All bolts, nuts, cable assemblies, cable anchors and bearing plates shall be galvanized.
2. The lower sections of the Posts 1&2 shall not protrude more than 4 in above the ground (measured along a 5' cord). Site grading may be necessary to meet this requirement.
3. The lower sections of the hinged posts should not be driven with the upper post attached. If the post is placed in a drilled hole, the backfill material must be satisfactorily compacted to prevent settlement.
4. When competent rock is encountered, a 12" Ø post hole, 20 in. deep cored into the rock surface may be used if approved by the engineer for post 1. Granular material will be placed in the bottom of the hole, approximately 2.5" deep to provide drainage. The first post can be field cut to length, placed in the hole and backfilled with suitable backfill. The soil plate may be trimmed if required.
5. A site evaluation should be considered if there is less than 25' between the outlet side of the terminal and any adjacent driving lane.
6. The breakaway cable assembly must be taut. A locking device (vice grips or channel lock pliers) should be used to prevent the cable from twisting when tightening nuts.

Road Systems, Inc.
Big Spring, TX
Phone: 432-263-2435
or Phone: 330-346-0721

**SKT-SP Terminal
(Standard Post)**

2 Post System

Sheet: 1

Date: 01/26/09

By: JRR

Rev: 0

Drawing Name: SKT-SP-S

Scale: None

Rev: 0