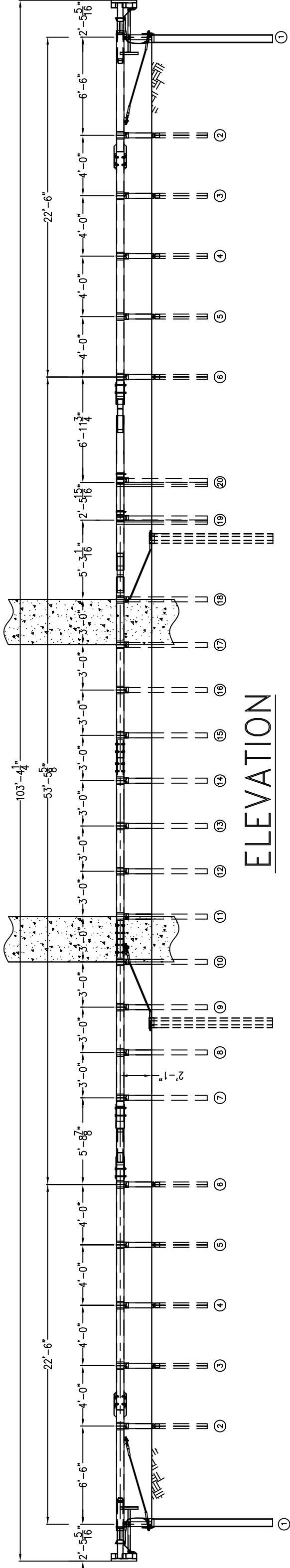
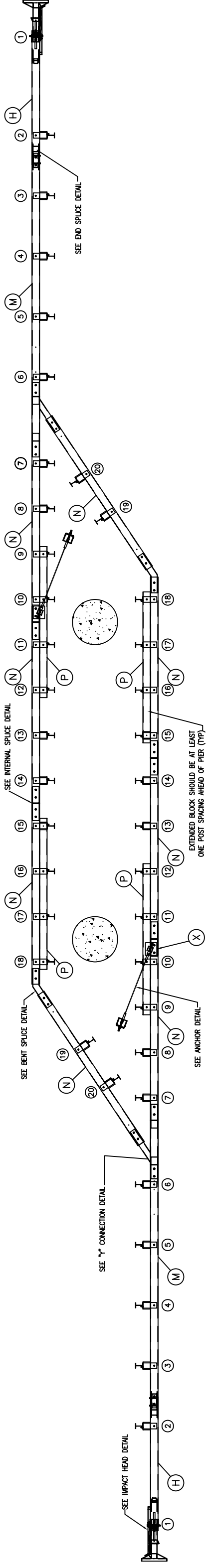
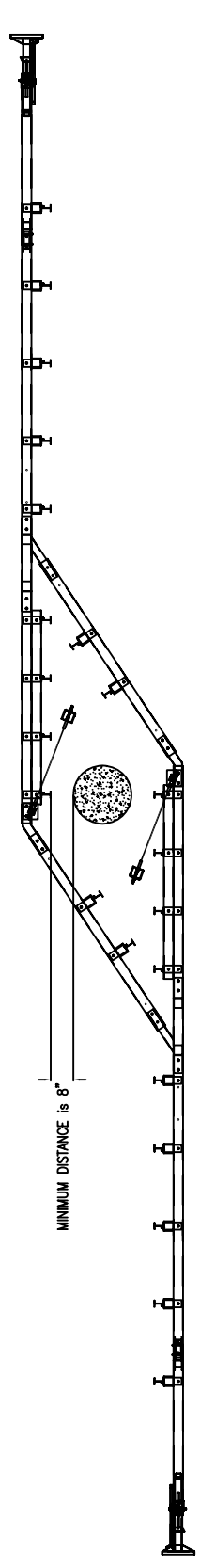


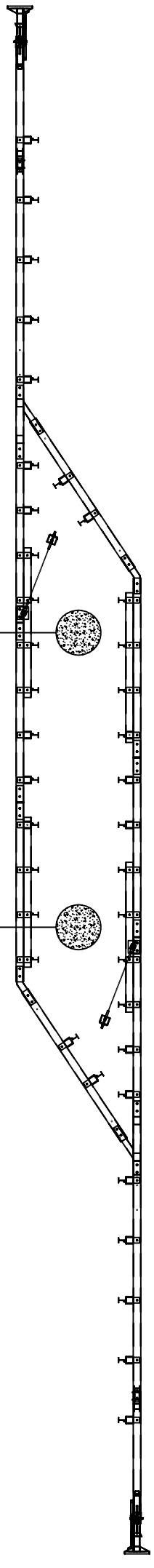
PLAN



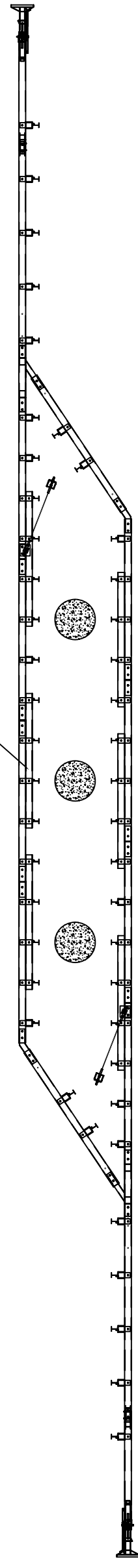
TYPICAL SINGLE PIER APPLICATION



TYPICAL DOUBLE PIER APPLICATION



TYPICAL TRIPLE PIER APPLICATION



- General Notes for the BEAT-BP:
- 1.) Unless otherwise noted, all hardware, cable assemblies, tubing, posts, impact heads and other steel components shall be galvanized.
 - 2.) When site conditions permit, posts may be driven. If posts are placed in a drilled hole, the backfill material must be satisfactorily compacted to prevent settlement.
 - 3.) Contact the manufacturer for installation recommendations when rock is encountered.
 - 4.) The lower section of post #1 should not be driven with the upper post section attached.
 - 5.) The breakaway cable assembly must be taut. A locking device (vice grips or channel locks) should be used to prevent the cable from twisting when tightening nuts.
 - 6.) An object marker meeting State specifications should be installed on the front of the impact head.
 - 7.) The approach area in front of the BEAT-BP and the area within the system itself shall be free of fixed obstacles and have a fill slope or a cut slope of 10:1 or flatter.

RSI
Road Systems, Inc.
Big Spring, TX
Phone: 432-265-2455
or Phone: 330-346-0721

Sheet: **S1**

Date: 05/24/06

By: JRR

Scale: NONE

Drawing Name: BEAT-BP-2P

BEAT BRIDGE PIER PROTECTION SYSTEM

TYPICAL SYSTEM LAYOUT FOR TWO PIERS @ 21' PIER SPACING