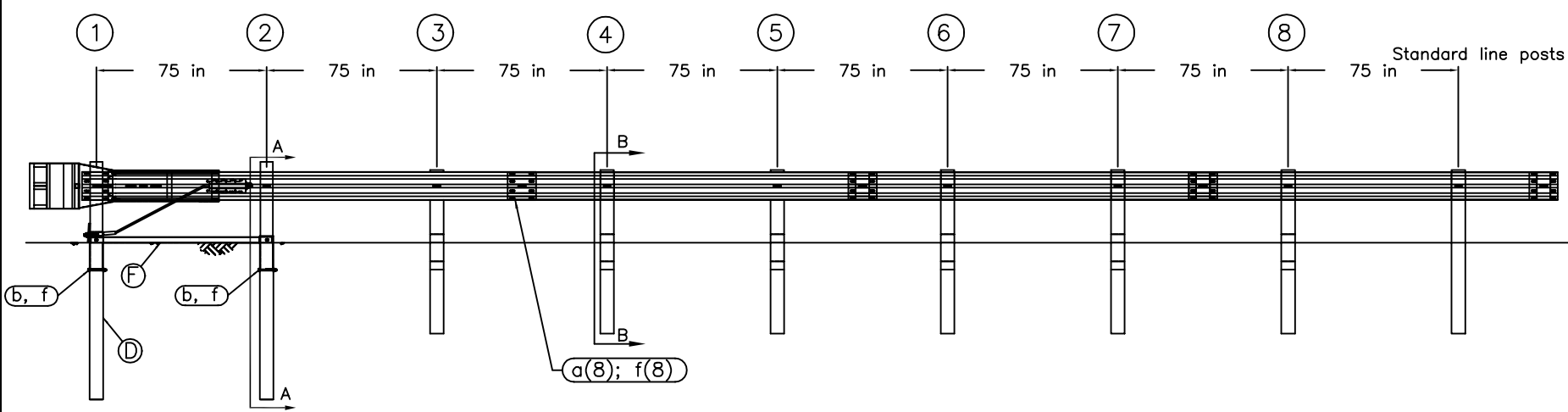
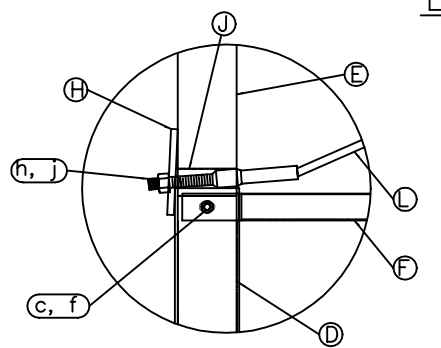


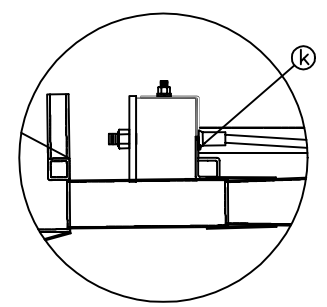
TRAFFIC → PLAN



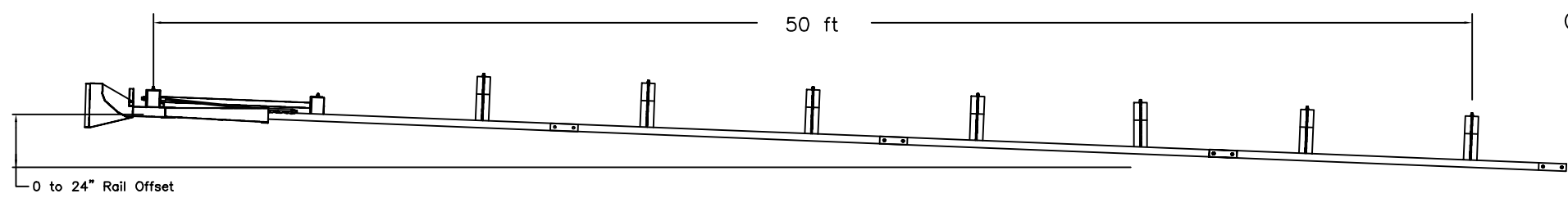
ELEVATION



POST #1 CONNECTION DETAIL



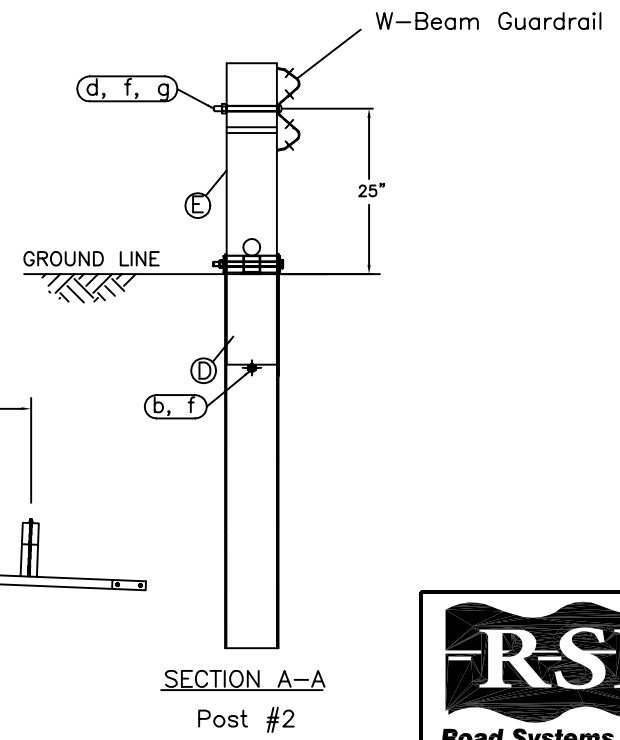
IMPACT HEAD CONNECTION DETAIL



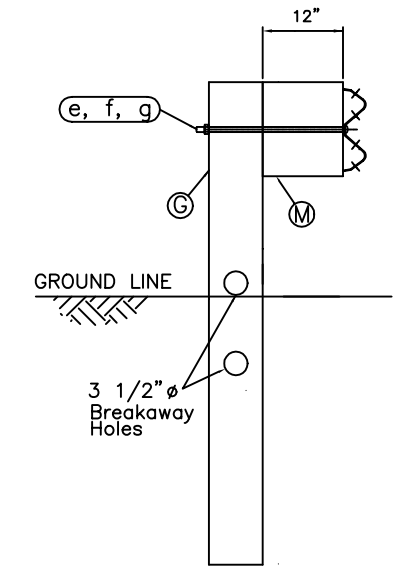
OPTIONAL FLARED INSTALLATION  
25:1 maximum flare rate

- GENERAL NOTES:
1. Breakaway posts are required with the SKT.
  2. All bolts, nuts, cable assemblies, cable anchors and bearing plates shall be galvanized.
  3. The SKT can be flared at a rate of up to 25:1 to prevent the impact head from encroaching on the shoulder.
  4. The foundation tubes shall not protrude more than 4" above the ground (measured along a 5' cord). Site grading may be necessary to meet this requirement.
  5. When rock is encountered, a 12" Ø post hole, 20" into the rock surface may be used if approved by the engineer. Granular material will be placed in the bottom of the hole, approximately 2.5" deep to provide drainage. The first two posts can be field cut to length, placed in the hole and backfilled with adequately compacted material excavated from the hole.
  6. The breakaway cable assembly must be taut. A locking device (vice grips or channel lock pliers) should be used to prevent the cable from twisting when tightening nuts.
  7. A site evaluation should be considered if there is less than 25' between the outlet side of the terminal and any adjacent driving lane.
  8. The soil tubes may be driven with an approved driving head. They shall not be driven with the post in the tube.
  9. The wood blockouts should be "toe-nailed" to the rectangular wood posts to prevent them from turning when the wood shrinks.

| ITEM                                | QTY | BILL OF MATERIALS                    | ITEM NO.  |
|-------------------------------------|-----|--------------------------------------|-----------|
| A                                   | 1   | IMPACT HEAD                          | S3000     |
| B                                   | 1   | W-BEAM GUARDRAIL END SECTION, 12 Ga. | S1303 MGS |
| C                                   | 3   | W-BEAM GUARDRAIL, 12 Ga.             | G1203 MGS |
| D                                   | 2   | FOUNDATION TUBE                      | E731      |
| E                                   | 2   | BCT WOOD POST                        | P650 MGS  |
| F                                   | 1   | GROUND STRUT                         | E780      |
| G                                   | 6   | CRT WOOD POST                        | P671 MGS  |
| H                                   | 1   | BEARING PLATE                        | E750      |
| J                                   | 1   | PIPE SLEEVE                          | E740      |
| K                                   | 1   | CABLE ANCHOR BOX                     | S760      |
| L                                   | 1   | BCT CABLE ANCHOR ASSEMBLY            | E770      |
| M                                   | 6   | MGS TIMBER BLOCKOUT OR EQUIV.        | P618      |
| HARDWARE (ALL DIMENSIONS IN INCHES) |     |                                      |           |
| a                                   | 24  | 5/8Ø x 1 1/4 SPLICE BOLT             | B580122   |
| b                                   | 2   | 5/8Ø x 7 1/2 HEX BOLT                | B580754   |
| c                                   | 2   | 5/8Ø x 10 HEX BOLT                   | B581004   |
| d                                   | 1   | 5/8Ø x 10 H.G.R. BOLT                | B581002   |
| e                                   | 6   | 5/8Ø x 22 H.G.R. BOLT                | B582202   |
| f                                   | 35  | 5/8Ø H.G.R. NUT                      | N050      |
| g                                   | 7   | H.G.R. WASHER                        | W050      |
| h                                   | 2   | 1 ANCHOR CABLE HEX NUT               | N100      |
| j                                   | 2   | 1 ANCHOR CABLE WASHER                | W100      |
| k                                   | 2   | 3/8 x 3 LAG SCREW                    | E350      |
| m                                   | 8   | CABLE ANCHOR BOX SHOULDER BOLT       | SB58A     |
| n                                   | 8   | 1/2 A325 STRUCTURAL NUT              | N055A     |
| o                                   | 16  | 1 1/16 OD x 9/16 ID A325 STR. WASHER | W050A     |



SECTION A-A  
Post #2



SECTION B-B  
Posts 3 thru 8

**RSI**  
Road Systems, Inc.  
Big Spring, TX  
Phone: 432-263-2435  
or Phone: 330-346-0721

Sequential Kinking Terminal  
SKT - Assembly

Midwest Guardrail System  
Wood Post System

Drawing Name: SKT-MGS-W-US Scale: NONE

Sheet: A1  
Date: 12/01/04  
By: JRR  
Rev: 0