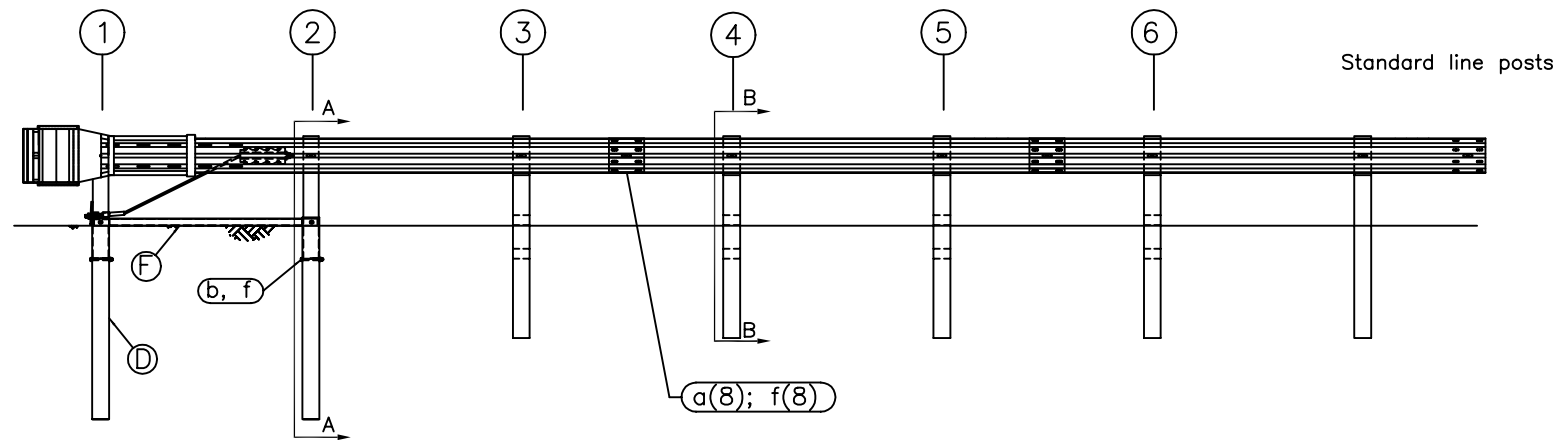
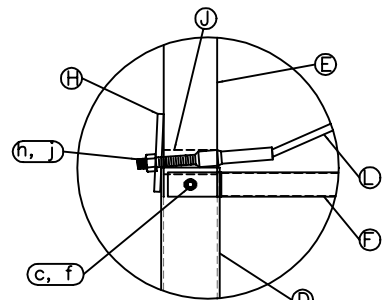


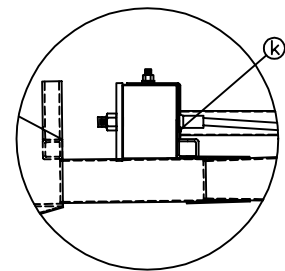
TRAFFIC → PLAN



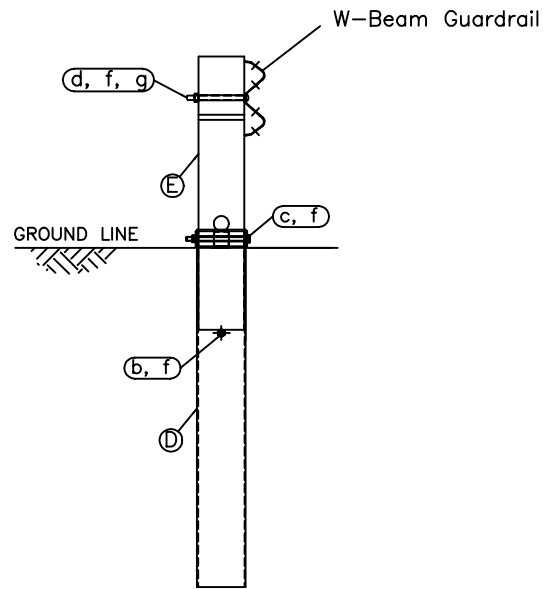
ELEVATION



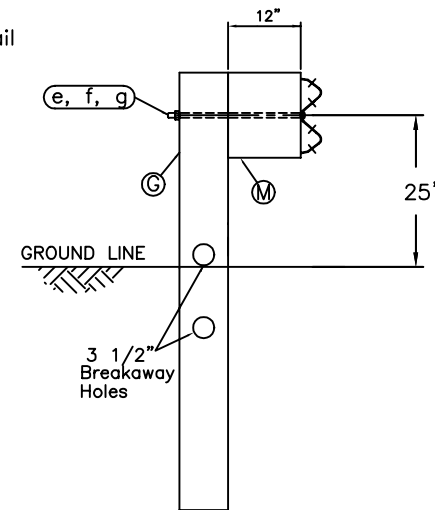
POST #1 CONNECTION DETAILS



IMPACT HEAD CONNECTION DETAIL



SECTION A-A  
Post #2



SECTION B-B  
Posts 3 thru 6

ITEM	QTY	BILL OF MATERIALS	ITEM NO.
A	1	IMPACT HEAD	F3000
B	1	W-BEAM GUARDRAIL END SECTION, 12 Ga.	F1303 MGS
C	2	W-BEAM GUARDRAIL, 12 Ga.	G1203 MGS
D	2	FOUNDATION TUBE	E731
E	2	BCT WOOD POST	P650 MGS
F	1	GROUND STRUT	E780
G	4	CRT WOOD POST	P671 MGS
H	1	BEARING PLATE	E750
J	1	PIPE SLEEVE	E740
K	1	CABLE ANCHOR BOX	S760
L	1	BCT CABLE ANCHOR ASSEMBLY	E770
M	4	MGS TIMBER BLOCKOUT OR RECYC. EQUIV.	P618
HARDWARE (ALL DIMENSIONS IN INCHES)			
a	16	5/8 $\phi$ x 1 1/4 SPLICE BOLT	B580122
b	2	5/8 $\phi$ x 7 1/2 HEX BOLT	B580754
c	2	5/8 $\phi$ x 10 HEX BOLT	B581004
d	1	5/8 $\phi$ x 10 H.G.R. BOLT	B581002
e	4	5/8 $\phi$ x 22 H.G.R. BOLT	B582202
f	25	5/8 $\phi$ H.G.R. NUT	N050
g	5	H.G.R. WASHER	W050
h	2	1 ANCHOR CABLE HEX NUT	N100
j	2	1 ANCHOR CABLE WASHER	W100
k	2	3/8 x 3 LAG SCREW	E350
m	8	CABLE ANCHOR BOX SHOULDER BOLT	SB58A
n	8	1/2 A325 STRUCTURAL NUT	N055A
o	16	1 1/16 OD x 9/16 ID A325 STR. WASHER	W050A

GENERAL NOTES:

- Breakaway posts are required with the FLEAT.
- All bolts, nuts, cable assemblies, cable anchors and bearing plates shall be galvanized.
- The foundation tubes shall not protrude more than 4 in above the ground (measured along a 5' cord). Site grading may be necessary to meet this requirement.
- When rock is encountered, a 12"  $\phi$  post hole, 20 in into the rock surface may be used if approved by the engineer. Granular material will be placed in the bottom of the hole, approximately 2.5" deep to provide drainage. The first two posts can be field cut to length, placed in the hole and backfilled with adequately compacted material excavated from the hole.
- The breakaway cable assembly must be taut. A locking device (vice grips or channel lock pliers) should be used to prevent the cable from twisting when tightening nuts.
- The soil tubes may be driven with an approved driving head. They shall not be driven with the post in the tube.
- The wood blockouts should be "toe-nailed" to the rectangular wood posts to prevent them from turning when the wood shrinks.



**Road Systems, Inc.**

Big Spring, TX  
Phone: 432-263-2435  
or Phone: 330-346-0721

Flared Energy Absorbing  
Terminal - FLEAT Assembly  
Midwest Guardrail System

Wood Post System

Drawing Name:  
FLT-MGS-W-US

Scale:  
None

Sheet:  
A1  
Date:  
12/01/2004  
By:  
JRR  
Rev:  
0