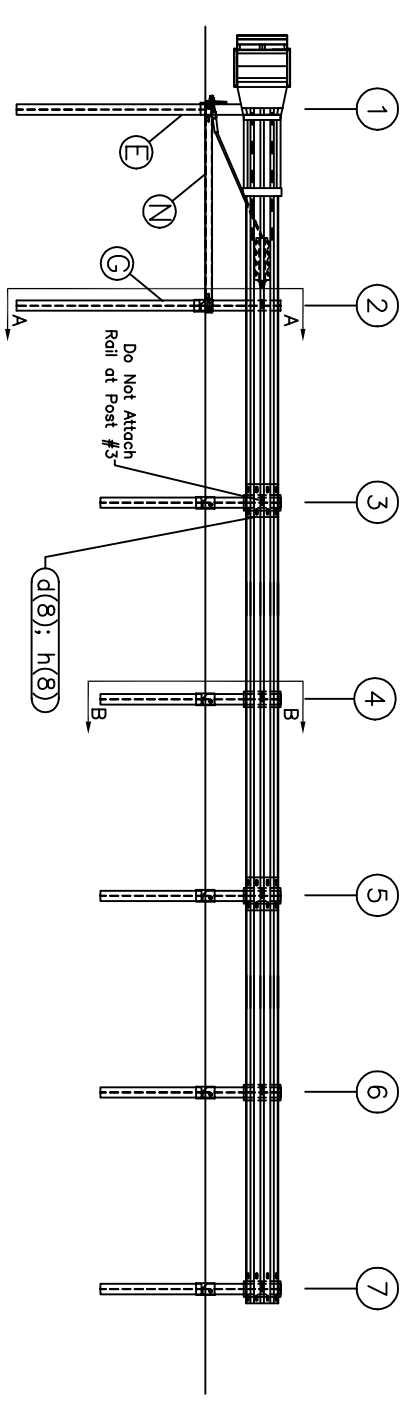
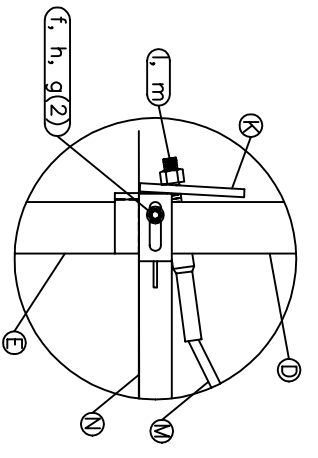


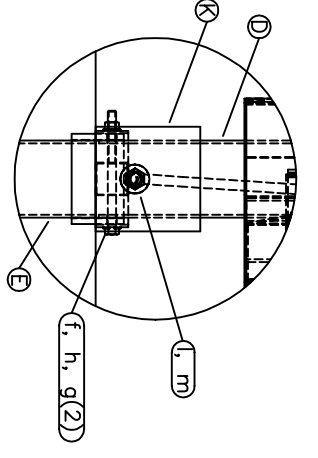
TRAFFIC → PLAN



ELEVATION

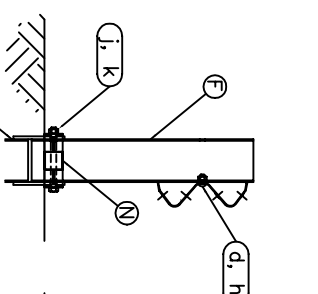


SIDE VIEW

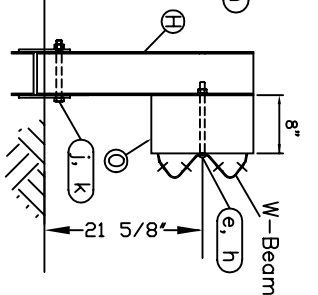


FRONT VIEW

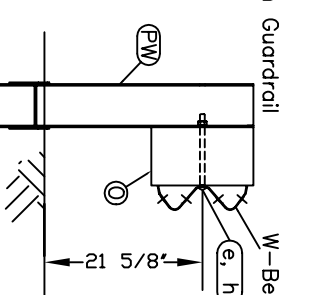
POST #1 CONNECTION DETAILS



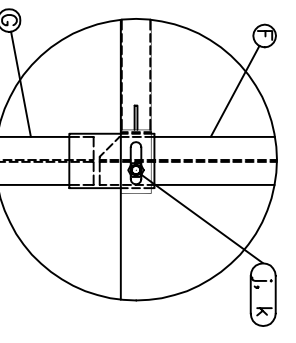
SECTION A-A
Post #2
BOTH



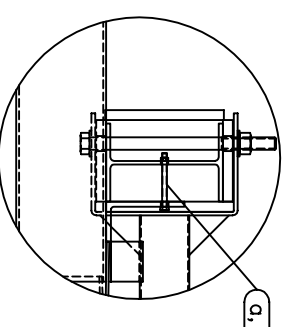
SECTION B-B
Posts 3 thru 7
HINGED POST



SECTION B-B
Posts 3 thru 7
WELDED POST



Side View Detail of Post #2



Impact Head Connection Detail

ITEM	QTY	BILL OF MATERIALS	ITEM NO.
A	1	IMPACT HEAD	F3000
B	1	W-BEAM GUARDRAIL END SECTION, 12 Ga.	F1303
C	2	W-BEAM GUARDRAIL, 12 Ga.	G1203
D	1	FIRST POST ASSEMBLY TOP	HP1A
E	1	FIRST POST ASSEMBLY BOTTOM	HP1B
F	1	SECOND POST ASSEMBLY TOP	HP2A
G	1	SECOND POST ASSEMBLY BOTTOM	HP2B
H	5	BREAKAWAY LINE POST TOP	HP3A
J	5	BREAKAWAY LINE POST BOTTOM	HP3B
K	1	BEARING PLATE	E750
L	1	CABLE ANCHOR BOX	S760
M	1	BCT CABLE ANCHOR ASSEMBLY	E770
N	1	GROUND STRUT HINGED POST	S785
O	5	ROUTED TIMBER BLOCKOUT OR RECYC. EQUIV.	P616
HARDWARE (ALL DIMENSIONS IN INCHES)			
a	2	1/4 x 4 HEX BOLT GRD 5	B140404A
b	4	1/4 WASHER	W014
c	2	1/4 HEX NUT	N014
d	17	5/8 Dia. x 1 1/4 SPLICE BOLT (POST #2)	B580122
e	5	5/8 Dia. x 10 H.G.R. BOLT (POSTS 3 THRU 7)	B581002
f	1	5/8 Dia. x 9 HEX BOLT GRD 5	B580904A
g	2	5/8 WASHER	W050
h	23	5/8 Dia. H.G.R NUT	N050
j	6	3/4 Dia. x 8 1/2 HEX BOLT GRD A449	B340854A
k	6	3/4 Dia. HEX NUT	N030
l	2	1 ANCHOR CABLE HEX NUT	N100
m	2	1 ANCHOR CABLE WASHER	W100
n	8	CABLE ANCHOR BOX SHOULDER BOLT	SB58A
o	8	1/2 A325 STRUCTURAL NUT	N055A
p	16	1 1/16 OD x 9/16 ID A325 STR. WASHER	W050A
WELDED POST QUANTITIES			
*PW	5	STEEL BREAKAWAY POST	PB621
*J	1	3/4 Dia. x 8 1/2 HEX BOLT GRD A449	B340854A
*K	1	3/4 Dia. HEX NUT	N030

GENERAL NOTES:

1. Breakaway posts are required with the FLEAT.
2. All bolts, nuts, cable assemblies, cable anchors and bearing plates shall be galvanized.
3. The lower sections of the posts shall not protrude more than 4 in above the ground (measured along a 5' cord). Site grading may be necessary to meet this requirement.
4. The lower sections of the hinged posts should not be driven with the upper post attached. If the post is placed in a drilled hole, the backfill material must be satisfactorily compacted to prevent settlement.
5. When rock is encountered, a 10" Ø post hole, 20 in into the rock surface may be used if approved by the engineer. Granular material will be placed in the bottom of the hole, approximately 2.5" deep to provide drainage. The first two posts can be field cut to length, placed in the hole and backfilled with adequately compacted material excavated from the hole.
6. The breakaway cable assembly must be taut. A locking device (vice grips or channel lock pliers) should be used to prevent the cable from twisting when tightening nuts.

RST
Road Systems, Inc.
Big Spring, TX
Phone: 432-563-2435
or Phone: 330-346-0721

Flared Energy Absorbing
Terminal - FLEAT Assembly

Steel Post System
Hinged and Welded Options

Drawing Name: **FLT-S-US** Scale: **None** Rev: **0**

Sheet: **A1**
Date: **1/03/2006**
By: **JRR**