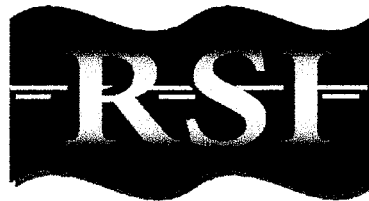


Test Level 2 (TL-2)

Supplemental
Installation Instructions
for the

SKT Tangent Terminal & FLEAT Flared Terminal



ROAD SYSTEMS, INC.

P. O. Box 2163

Big Spring, Texas 79720

Phone: (432) 263-2435 FAX: (432) 267-4039

Technical Support & Marketing Phone: (330) 346-0721

Technical Support & Marketing Fax: (330) 346-0722

This Installation Manual can be downloaded from RSI web site
www.roadsystems.com

This supplemental manual is divided into 2 sections:

- **SKT** Test Level 2 (reduced speed) Design Option / 25'-0" long _____Page 3
- **FLEAT** Test Level 2 (reduced speed) Design Option / 25'-0" long ____Page 5

.....

Smaller Counties and Municipalities have needs for lower speed design systems. The interchangeability between system components for not only tangent / flared terminals but also Test Level 3 and Test Level 2 terminals becomes extremely important. The simplicity and the inventory reduction are essential considerations.

.....

The only difference between the **Test Level 3** (100 km/hr – 62 mph) **SKT** and **FLEAT** systems and the **Test Level 2** (70 km/hr – 45 mph) **SKT** and **FLEAT** systems is the length of the system.

The **TL-2** design option is shorter than the **TL-3**.

Where operating speeds are expected to be at or below (70 km/hr – 45 mph), the shorter **TL-2** design option may be considered.

Test Level 2 “Supplemental” Installation Instructions for the SKT & FLEAT Terminals

———— INTRODUCTION ————

**This “Supplemental” Installation Manual is to be used
in conjunction with the following manuals:**

- Installation Instructions for the **SKT** (tangent terminal 50'-0" long)
Publication 030502
- Installation Instructions for the **FLEAT** (flared terminal 37'-6" long)
Publication 091301
- **Steel Post Supplemental** Installation for **SKT / FLEAT /FLEAT-MT**
Publication 121702

NOTE:

The above manuals for the **SKT & FLEAT** address locations that are selected as **Test Level 3** (100 km/hr – 62 mph) design speeds.

.....

This “Supplemental” Installation Manual covers **Test Level 2 (TL-2)** options for **SKT & FLEAT** that are not addressed in the above 3 Installation Manuals.

- **Test Level 2** (reduced speed 70 km/hr – 45 mph) version of the **SKT**
- **Test Level 2** (reduced speed 70 km/hr – 45 mph) version of the **FLEAT**

.....

It is important to remember that with all of the available options for the **SKT & FLEAT** (wood posts, steel posts, Test Level 3 speeds or Test Level 2 speeds), most of the components are interchangeable between the **SKT & FLEAT**.

.....

SKT

Test Level 2 Design Option

(Wood or Steel Posts)

The TL-2 **SKT** is to be used where operating speeds are expected to be at or below 70 km/hr – 45 mph.

See **Figure 1** for a layout of the **SKT** TL-2 system.

For details of the assembly of **SKT** components, refer to either the wood post or steel post **SKT** Installation Manual.

Shown below is a comparison of the Test Level 2 and Test Level 3 **SKT** systems.

	TEST LEVEL 2	TEST LEVEL 3
SPEED	70 km/hr (45mph)	100 km/hr (62mph)
LENGTH	25'-0"	50'-0"
POSTS	5	8

With the exception of the length, the TL-2 and TL-3 **SKT** systems are exactly the same. This is true for either the wood post **SKT** system or steel post **SKT** system.

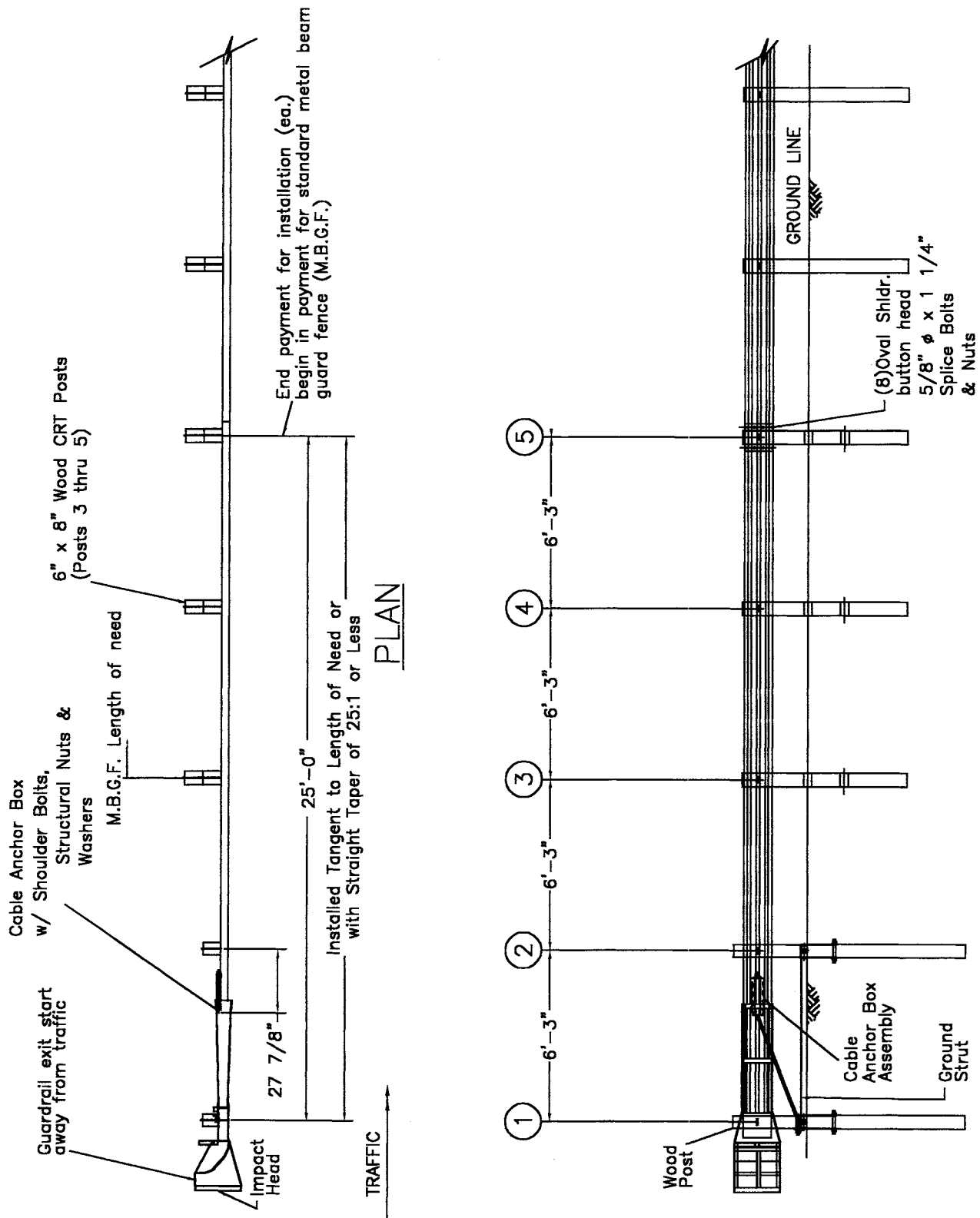


Figure 1. Plan and Elevation View of Test Level 2 SKT System

**(Wood Post System Shown. Steel Post System Similar.)
TWO Foundation Tube Option Shown**

FLEAT

Test Level 2 Design Option

(Wood or Steel Posts)

The TL-2 FLEAT is to be used where operating speeds are expected to be at or below 70 km/hr – 43 mph.

See **Figure 2** for a layout of the FLEAT TL-2 system.

For details of the assembly of FLEAT components, refer to either the wood post or steel post FLEAT Installation Manual.

Shown below is a comparison of the Test Level 2 and Test Level 3 FLEAT systems.

	TEST LEVEL 2	TEST LEVEL 3
SPEED	70 km/hr (45mph)	100 km/hr (62mph)
LENGTH	25'-0"	37'-6"
FLARE OFFSET	1'-8" to 2'-8"	2'-6" to 4'-0"
FLARE RATE	3.8 to 6.1 degrees	3.8 to 6.1 degrees
POSTS	5	7

With the exception of the length, the TL-2 and TL-3 FLEAT systems are exactly the same. This is true for either the wood post FLEAT system or steel post FLEAT system.

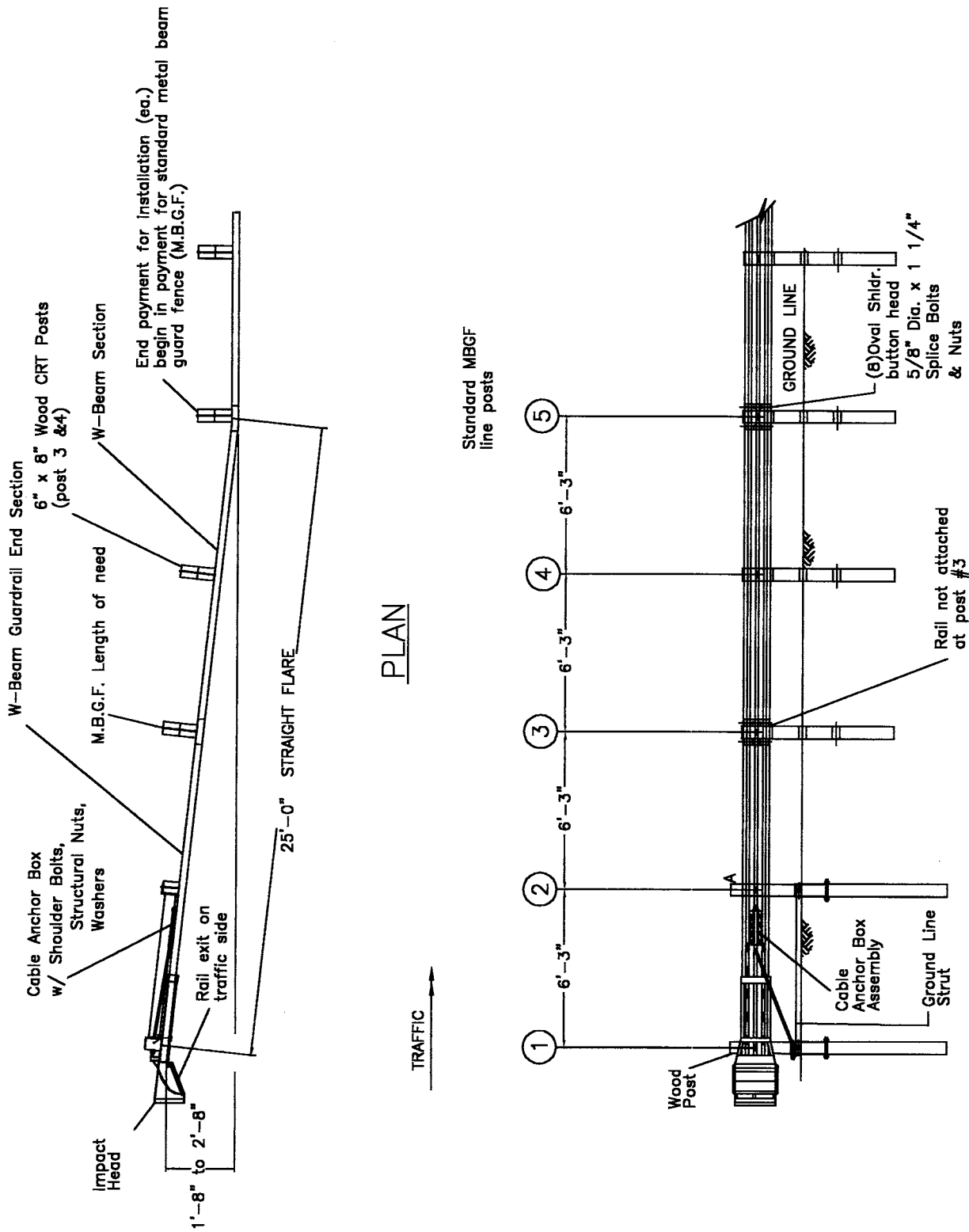


Figure 2. Plan and Elevation View of Test Level 2 FLEAT System

(Wood Post System Shown. Steel Post System Similar.)

Test Level 2 Option Installation Inspection Checklist

Product: SKT FLEAT Wood Post Steel Post

State: _____ Date: _____

Project #: _____ Inspection performed by: _____

Location: _____

Refer to Installation Inspection Checklists in back of the following (wood post design) manuals for specific SKT and FLEAT items to be checked:

- Installation Instructions for **SKT** (tangent terminal 50'-0" long) Publication 030502
- Installation Instructions for **FLEAT** (flared terminal 37'-6" long) Publication 091301
- Supplemental **Steel Post** (for SKT, FLEAT, FLEAT-MT) Publication 121702

Additional Notes:
