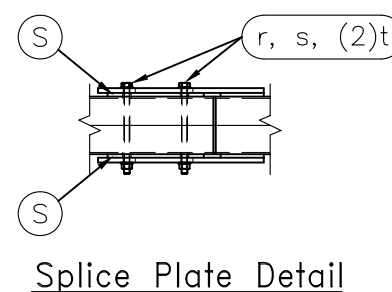
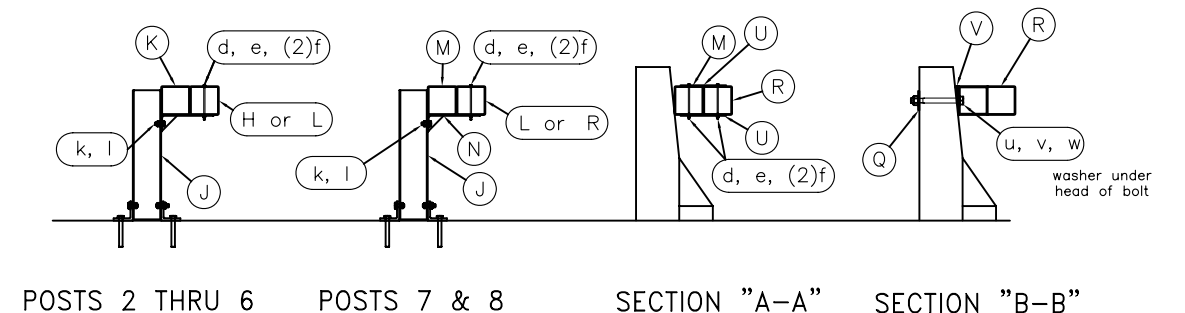


End Splice Channel Detail

ITEM P Splice Channels Will Set On The Top And Bottom Of ITEM L Second Rail. The Bent Plates Welded To The End Of ITEM H Ene Tube Rail Will Set On Top Of ITEM P Splice Channels.



Splice Plate Detail

| ITEM     | QTY | DESCRIPTION   | PART #    |
|----------|-----|---|-----------|
| A        | 1   | Box-Beam Impact Head                                    | B3000     |
| B        | 1   | Upper End Post W6x9 x 1'-9 1/2" LG.                     | BEAT-UP   |
| C        | 1   | Concrete Base Assembly Post 1                           | B-SS200   |
| D        | 1   | Support Bracket L4x2 x 4" LG.                           | BEAT-SB   |
| E        | 1   | Post Breaker Welded TS2x2x1/4"                          | BEAT-PB   |
| F        | 1   | Cable Anchor Assembly                                   | E770      |
| G        | 1   | Cable Anchor Bearing Plate                              | E750      |
| H        | 1   | End Tube Rail x 8'-0" LG.                               | B-SS102   |
| J        | 7   | Steel Breakaway Line Post W6x9 x 1'-9 3/4" LG.          | B-SS-PSM  |
| K        | 5   | Support Bracket w/ Blockout TS6x6 w/ Bent PL.           | B-SS104   |
| L        | 1   | Second Rail x 16'-2 1/2" LG.                            | B-SS106   |
| M        | 1   | Transition Blockout x 5'-5 1/2" LG.                     | B-SS108   |
| N        | 2   | Trans. Support Bracket 3/16" Bent PL. w/ Gusset         | B-SS110   |
| P        | 2   | Bent End Splice - Detail Below                          | BP-SC     |
| Q        | 2   | 1" Square Washer PL. 4x4x1/4"                           | B-SS112   |
| R        | 1   | Anchor Rail x 8'-6 13/16" LG.                           | B-SS114   |
| S        | 2   | Splice Plate 10"x 10"x 3/8"                             | B-SS116   |
| T        | 1   | 3/8" GALV. Cable x 20'-0"                               | C3820     |
| U        | 6   | Tie Plate PL. 11 1/2x3 1/2x3/16"                        | B-SS120   |
| V        | 1   | Spacer (OMIT ON 90° WALL)                               | B-SS122   |
| Z        | 14  | Concrete Base Angle Bracket Post 2-8                    | B-SS210   |
| HARDWARE |     |   |           |
| a        | 1   | 1/4" x 3" Hex Bolt Grade 2                              | B140304   |
| b        | 1   | 1/4" Hex Nut  | N014      |
| c        | 1   | 1/4" Washer   | W014      |
| d        | 14  | 5/16" x 7" Hex Bolt Grade 5                             | B5160704A |
| e        | 14  | 5/16" Hex Nut   | N0516     |
| f        | 28  | 5/16" Washer  | W0516     |
| g        | 1   | 1/2" x 2" Hex Bolt                                      | B120204   |
| h        | 1   | 1/2" x 5" Hex Bolt Grade 5                              | B120504A  |
| i        | 2   | 1/2" Hex Nut  | N012      |
| j        | 1   | 1/2" Washer   | W012      |
| k        | 7   | 5/8" x 1 1/2" Hex Bolt                                  | B580154   |
| l        | 7   | 5/8" Recess Nut   | N050      |
| m        | 14  | 5/8" x 2" Hex Bolt Grade 5                              | B580204A  |
| n        | 4   | 5/8" x 2 1/2" Hex Bolt Grade 5                          | B580254A  |
| o        | 1   | 5/8" x 3" Hex Bolt Grade 5                              | B580304A  |
| p        | 4   | 5/8" x 6" Hex Bolt Grade 5                              | B580604A  |
| q        | 8   | 5/8" x 8" Hex Bolt Grade 5                              | B580804A  |
| r        | 4   | 5/8" x 9" Hex Bolt Grade 5                              | B580904A  |
| s        | 39  | 5/8" Hex Nut  | N055      |
| t        | 43  | 5/8" Washer   | W050      |
| u        | 2   | 1" x 16" Hex Bolt Grade 5 (Length Varies w/ Wall Sect.) | B101604A  |
| v        | 4   | 1" Hex Nut Grade 5                                      | N100A     |
| w        | 4   | 1" Washer Grade 5                                       | W100A     |
| x        | 2   | Cable Tie   | CT100     |
| y        | 31  | 3/4" Anchor (20 kip capacity) Not Supplied              |           |

General Notes for the BEAT-SSCC-SM:

- 1.) Unless otherwise noted, all hardware, cable assemblies, tubing, posts, impact heads and other steel components shall be galvanized.
- 2.) The breakaway cable assembly must be taut. A locking device (vice grips or channel locks) should be used to prevent the cable from twisting when tightening nuts.
- 3.) An object marker meeting State specifications should be installed on the front of the impact head.
- 4.) The approach area in front of the BEAT-SSCC-SM and the area within the system itself shall be free of fixed obstacles and have a fill slope or a cut slope of 10:1 or flatter.



BEAT-SSCC-SM  
Single Sided Crash Cushion  
Surface Mounted  
Assembly Drawing

Sheet:  
**A1**  
Date:  
01/20/10  
By:  
JRR  
Rev:

Drawing Name: BEAT-SSCC-SM-US  
Scale: NONE