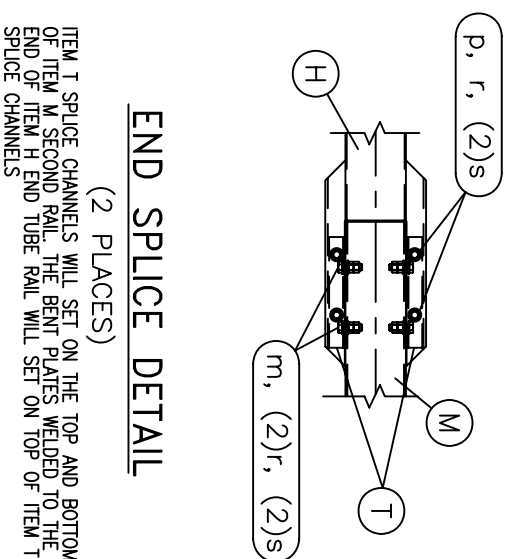
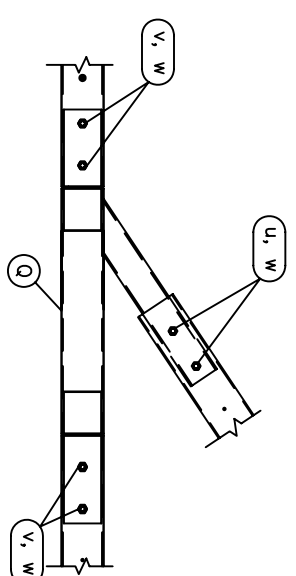


**IMPACT HEAD  
DETAIL**  
(2 PLACES)

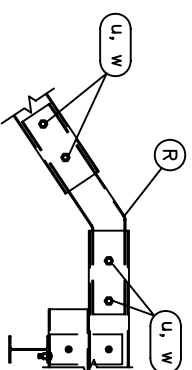


ITEM T SPLICE CHANNELS WILL SET ON THE TOP AND BOTTOM OF ITEM M SECOND RAIL. THE BENT PLATES WELDED TO THE END OF ITEM H END TUBE RAIL WILL SET ON TOP OF ITEM T SPLICE CHANNELS

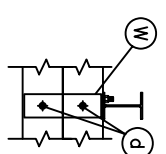
**END SPLICE DETAIL**  
(2 PLACES)



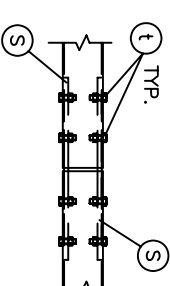
**"Y" CONNECTION DETAIL**  
(2 PLACES)



**BENT SPLICE DETAIL**  
(2 PLACES)

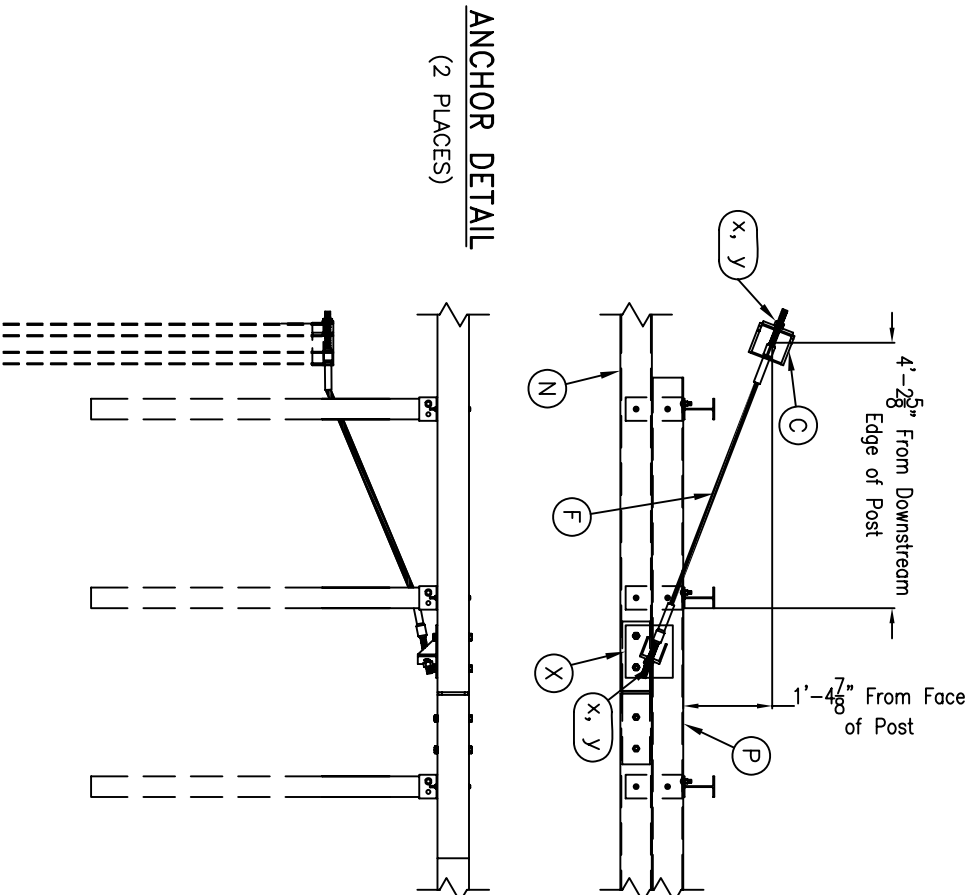


**TIE PLATE DETAIL**  
(32 PLACES)

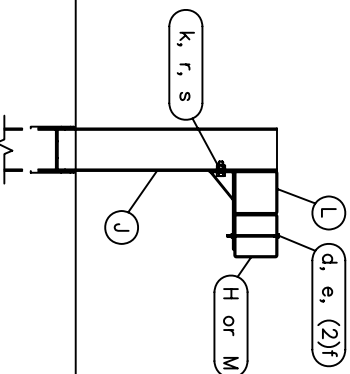


**INTERNAL SPLICE DETAIL**  
(12 PLACES)

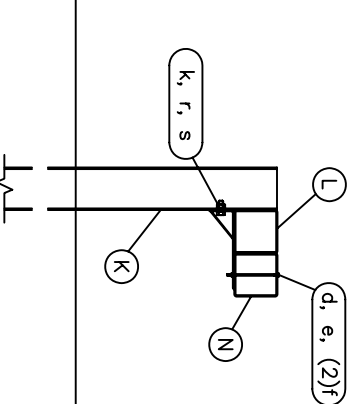
**ANCHOR DETAIL**  
(2 PLACES)



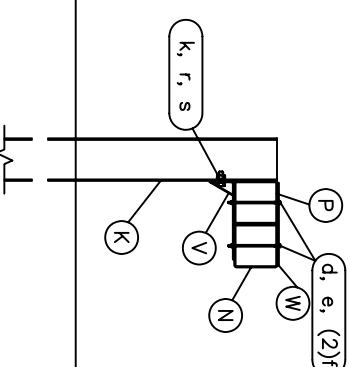
**END TERMINAL POSTS**  
(10 PLACES TOTAL)



**LINE POSTS Without  
Extended Block (P)**



**LINE POSTS With  
Extended Block (P)**



POSTS 2 THRU 6  
(10 PLACES TOTAL)

POSTS 7-9, 14-16, 21-23, 28-30, 35-36  
(28 PLACES TOTAL)

POSTS 10-13, 17-20, 24-27, 31-34  
(32 PLACES TOTAL)

ITEM	QTY	DESCRIPTION
A	2	Box-Beam Impact Head
B	2	Upper End Post W6x9# x 21 1/2"
C	4	Lower End Post W6x15# x 8'-0"
D	2	Support Bracket L 4" x 2" x 4" LG.
E	2	Post Breaker Welded TS 2" x 2" x 1/4"
F	4	Cable Anchor Assembly
G	2	Cable Anchor Bearing Plate
H	2	End Tube Rail 8'-0" LG. x 1/8" THICK
J	10	Steel Breakaway Post W6x9# x 6'-0"
K	60*	Standard Steel Post W6x9# x 6'-0"
L	38*	Support Bracket TS 6" x 6" w/ Bent Pl.
M	2	Second Rail 16'-2 1/2" LG.
N	16*	BP-Rail Section 11' - 11 1/2" LG.
P	8*	Extended Block 10' LG.
Q	2	"Y" Connection
R	2	Bent Splice
S	24*	Box Beam Splice Plates w/Nuts (2 per splice)
T	4	End Section Splice Channel Bent Pl.
U	2	3/8" GALV. Cable 20' LG.
V	32*	Support Bracket
W	32*	Tie Plate
X	2	Anchor Plate
HARDWARE		
Q	2	1/4" x 3" Hex Bolt Grade 2
B	2	1/4" Hex Nut
C	4	1/4" Washer
D	104*	5/16" x 7 1/2" Hex Bolt Grade 5
E	104*	5/16" Hex Nut
F	208*	5/16" Washer
G	2	1/2" x 2" Hex Bolt Grade 2
H	2	1/2" x 5" Hex Bolt Grade 5
I	4	1/2" Hex Nut
J	4	1/2" Washer
K	70*	5/8" x 1 1/2" Hex Bolt Grade 5
M	8	5/8" x 2 1/2" Hex Bolt Grade 5
N	2	5/8" x 3" Hex Bolt Grade 5
P	8	5/8" x 6" Hex Bolt Grade 5
Q	2	5/8" x 8" Hex Bolt Grade 5
R	98*	5/8" Hex Nut
S	106*	5/8" Washer
T	96*	3/4" x 2" Hex Bolt Grade 5
U	12	3/4" x 7" Hex Bolt Grade 5
V	8	3/4" x 8" Hex Bolt Grade 5
W	20	3/4" Hex Nut
X	8	1" Hex Nut Grade 5
Y	8	1" Washer Grade 5
Z	4	Cable Tie

\* QUANTITY VARIES DEPENDING ON PIER SPACING

**Road Systems, Inc.**  
Big Spring, TX  
Phone: 409-263-2435  
or Phone: 350-346-0721

BEAT BRIDGE PIER  
PROTECTION SYSTEM  
SYSTEM DETAILS AND  
PARTS LIST

Scale: NONE

Date: 05/24/06

By: JRR

Check: