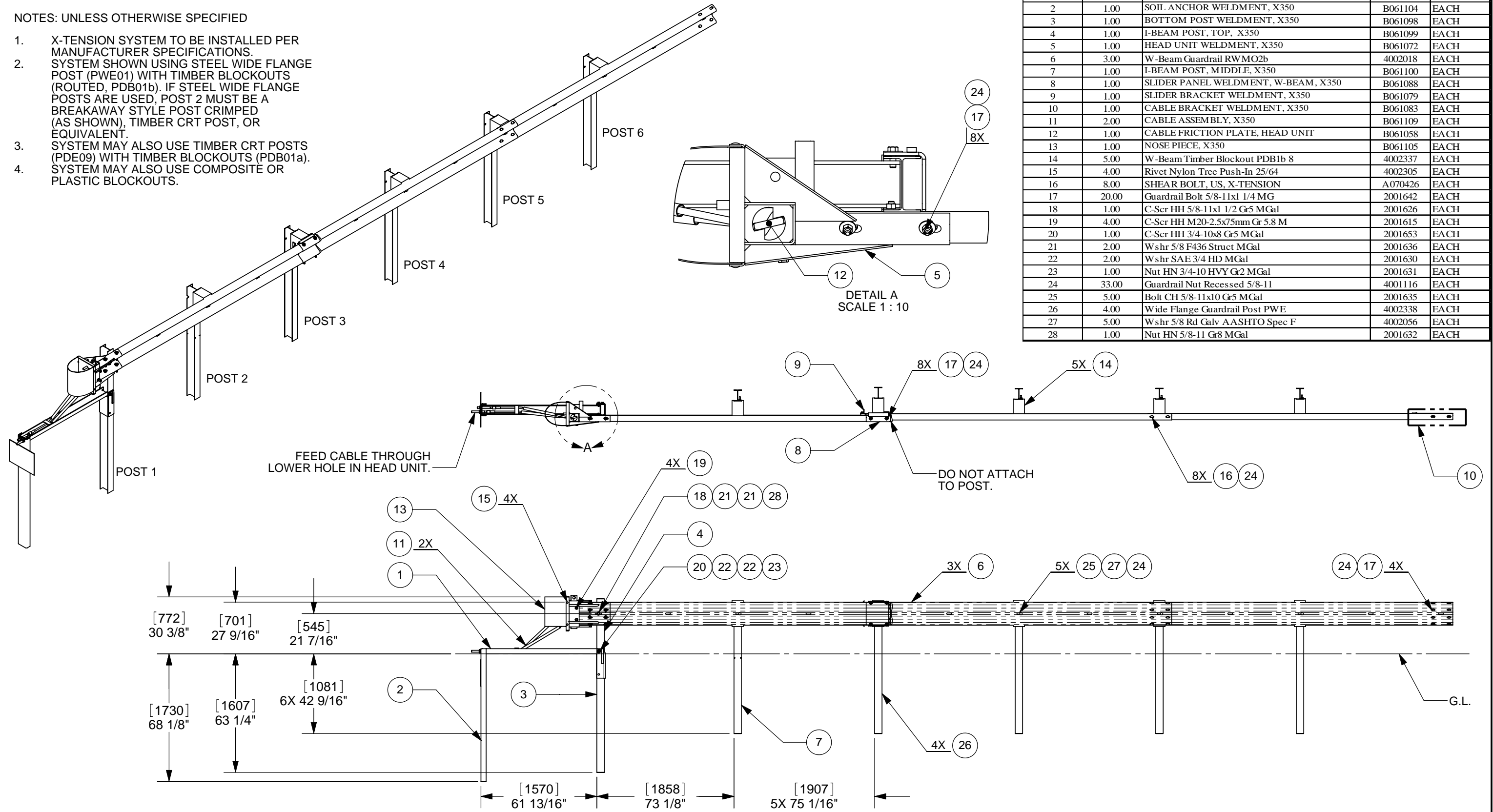


NOTES: UNLESS OTHERWISE SPECIFIED

1. X-TENSION SYSTEM TO BE INSTALLED PER MANUFACTURER SPECIFICATIONS.
2. SYSTEM SHOWN USING STEEL WIDE FLANGE POST (PWE01) WITH TIMBER BLOCKOUTS (ROUTED, PDB01b). IF STEEL WIDE FLANGE POSTS ARE USED, POST 2 MUST BE A BREAKAWAY STYLE POST CRIMPED (AS SHOWN), TIMBER CRT POST, OR EQUIVALENT.
3. SYSTEM MAY ALSO USE TIMBER CRT POSTS (PDE09) WITH TIMBER BLOCKOUTS (PDB01a).
4. SYSTEM MAY ALSO USE COMPOSITE OR PLASTIC BLOCKOUTS.



| Item | Qty   | Part Description                    | Part#   | UM   |
|------|-------|-------------------------------------|---------|------|
| 1    | 1.00  | GROUND STRUT WELDMENT, X350         | B061094 | EACH |
| 2    | 1.00  | SOIL ANCHOR WELDMENT, X350          | B061104 | EACH |
| 3    | 1.00  | BOTTOM POST WELDMENT, X350          | B061098 | EACH |
| 4    | 1.00  | I-BEAM POST, TOP, X350              | B061099 | EACH |
| 5    | 1.00  | HEAD UNIT WELDMENT, X350            | B061072 | EACH |
| 6    | 3.00  | W-Beam Guardrail RWMO2b             | 4002018 | EACH |
| 7    | 1.00  | I-BEAM POST, MIDDLE, X350           | B061100 | EACH |
| 8    | 1.00  | SLIDER PANEL WELDMENT, W-BEAM, X350 | B061088 | EACH |
| 9    | 1.00  | SLIDER BRACKET WELDMENT, X350       | B061079 | EACH |
| 10   | 1.00  | CABLE BRACKET WELDMENT, X350        | B061083 | EACH |
| 11   | 2.00  | CABLE ASSEMBLY, X350                | B061109 | EACH |
| 12   | 1.00  | CABLE FRICTION PLATE, HEAD UNIT     | B061058 | EACH |
| 13   | 1.00  | NOSE PIECE, X350                    | B061105 | EACH |
| 14   | 5.00  | W-Beam Timber Blockout PDB1b 8      | 4002337 | EACH |
| 15   | 4.00  | Rivet Nylon Tree Push-In 25/64      | 4002305 | EACH |
| 16   | 8.00  | SHEAR BOLT, US, X-TENSION           | A070426 | EACH |
| 17   | 20.00 | Guardrail Bolt 5/8-11x1 1/4 MG      | 2001642 | EACH |
| 18   | 1.00  | C-Scr HH 5/8-11x1 1/2 Gr5 MGal      | 2001626 | EACH |
| 19   | 4.00  | C-Scr HH M20-2.5x75mm Gr 5.8 M      | 2001615 | EACH |
| 20   | 1.00  | C-Scr HH 3/4-10x8 Gr5 MGal          | 2001653 | EACH |
| 21   | 2.00  | Wshr 5/8 F436 Struct MGal           | 2001636 | EACH |
| 22   | 2.00  | Wshr SAE 3/4 HD MGal                | 2001630 | EACH |
| 23   | 1.00  | Nut HN 3/4-10 HVY Gr2 MGal          | 2001631 | EACH |
| 24   | 33.00 | Guardrail Nut Recessed 5/8-11       | 4001116 | EACH |
| 25   | 5.00  | Bolt CH 5/8-11x10 Gr5 MGal          | 2001635 | EACH |
| 26   | 4.00  | Wide Flange Guardrail Post PWE      | 4002338 | EACH |
| 27   | 5.00  | Wshr 5/8 Rd Galv AASHTO Spec F      | 4002056 | EACH |
| 28   | 1.00  | Nut HN 5/8-11 Gr8 MGal              | 2001632 | EACH |

© 2006 Barrier Sytems Inc.  
The information heron is proprietary to Barrier Systems Inc. shall not be disclosed, duplicated or used otherwise without the express written approval of Barrier Systems Inc.

| REV. | CHANGES      | DATE    | BY  | REQ'D | NEXT ASSY. | ITEM |
|------|--------------|---------|-----|-------|------------|------|
| C    | SEE ECN# 871 | 1/25/07 | AEM |       |            |      |
| B    | SEE ECN# 840 | 2/21/07 | AEM |       |            |      |
| A    | SEE ECN# 821 | 1/25/07 | AEM |       |            |      |

SCALE: 1:50

|           |          |       |
|-----------|----------|-------|
| DRAWN BY  | DATE     | INIT. |
| APPR'D BY | 10/26/06 | AEM   |

TITLE:  
SYSTEM, X-TENSION GUARDRAIL TERMINAL

**BARRIER SYSTEMS INC**  
180 RIVER RD, RIO VISTA, CA 94571  
TEL: 707-374-6800 FAX: 707-374-6801

|        |                |     |
|--------|----------------|-----|
| SHEET  | DRAWING NUMBER | REV |
| 1 OF 1 | B061113        | C   |